

DIGITAL COVERT SURVEILLANCE



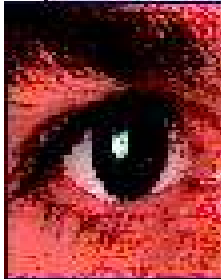
Unit 20 Murrell Green Business Park, London Road, Hook, Hampshire RG27 9GR
T: +44 (0) 1256 766600 F: +44 (0) 1256 766500 GSM: +44 (0) 7770808804/+44 (0) 7791730115
E: info@comm-spec.com & malik@comm-spec.com www.comm-spec.com

Registered Office: 4 High Street, Alton, Hampshire GU34 1BU Registered in England No: 04709360

DIGITAL VIDEO SYSTEM –GT500

COFDM - Video Transmission System

(Coded Orthogonal Frequency Divisional Multiplexing)



The GT500 is an exceptionally stable transmission platform in high multi-path environments, offering high quality low latency video images in conditions where traditional analogue methods fail.

The GT500 is suitable for body worn, mobile and temporary Operations, due to its low current consumption; allowing efficient battery operation.



COFDM is a form of modulation that is particularly well suited to the needs of surveillance teams. Video signals transmitted using the old analogue technique were prone or susceptible to echoes and ghost imaging because the signal would 'arrive' at the receiver at slightly different times - the signal would bounce around off the buildings and/or landscape, these multiple signals would then produce a ghost or echoed image. Video signals transmitted via COFDM completely address the 'multi-path' issue; the timing is such that the received signal is reconstructed back to its original form from the various multiple paths thus removing any echo or ghosting.

Using a diversity receiver increases the stability and reception of the video link. Diversity can be increased to utilise four antennas in 'cell site' installations.

We supply the system with a choice of frequencies to suit all operational environments.

FEATURES:

- High quality digital video
- Non-line of sight transmission capability
- Robust noise free transmission
- Greater transmission distances
- Encrypted secure transmission
- Available in 1.3GHz, 2.4GHz and 5.8GHz bands
- Multiple cameras within a single frequency
- Real time transmission (low latency)
- Compatible with industry standards
- Small compact modular enclosures
- Simple to implement
- Portable or static installations
- Low power consumption
- PAL and NTSC options
- Cost effective

APPLICATIONS:

- Rapid Deployment Camera Systems
- Security Installations
- Military Applications
- Transportation Applications
- Commercial & Industrial Applications
- Covert CCTV Monitoring
- Temporary Installations
- 'Last Mile Haul' -
(camera to monitoring/network)



Unit 20 Murrell Green Business Park, London Road, Hook, Hampshire RG27 9GR
 T: +44 (0) 1256 766600 F: +44 (0) 1256 766500 GSM: +44 (0) 7770808804/+44 (0) 7791730115
 E: info@comm-spec.com & malik@comm-spec.com www.comm-spec.com

Registered Office: 4 High Street, Alton, Hampshire GU34 1BU Registered in England No: 04709360



GT500

G 501 G 502

TRANSMITTER

VIDEO ENCODING

Compression
 Compression Rate
 Chrominance Profile
 Line Standard
 Video Bit Rates
 Latency
 Video Input
 Encryption
 Audio

JPEG and MPEG4
 CBR and VBR
 4:2:0
 525 and 625
 1Mb/sec to 20Mb/sec
 <100mS
 PAL or NTSC
 AES Encryption: Compliant with APCO
 Stereo Audio

COFDM RF OUTPUT

Output Frequency

L Band (1.15GHz - 1.4GHz)
 S Band (2.28GHz - 2.485GHz)
 C Band (5.725GHz - 5.850GHz)

Bandwidth & Resolution

Custom frequency bands are available upon request
 Standard - 8MHz JPEG2000 - QPSK (720x576)
 Narrow - 2MHz MPEG4 ñ QPSK (704x576 - 4CIF)
 Ultra Narrow - 1MHz MPEG4 - 16QAM (352x288 - CIF)
 100mW (GT501) and 1W (GT502) systems available
 QPSK or 16QAM or 64QAM

Output Power
 Modulation Type
 Guard Intervals
 COFDM Carriers
 COFDM Standard

1/8
 2K Carriers
 DVB-T Proprietary

PHYSICAL

Dimensions
 W130mm x D38mm x H175mm
 Weight

W59mm x D38mm x H146mm [GT501]
 W130mm x D38mm x H175mm (GT502)
 0.39Kgs (GT501)
 1.55Kgs (GT502)

Power Supply

500mA @ 12vDC (GT501)
 1.5A @ 12vDC (GT502)
 Up to 4 Hours per pack

Battery Life

Antenna Connection
 Power Connection
 Channel Selection Switch
 Video Connector

SMA
 LEMO 2 Pin OB
 Rotary HEX Switch
 BNC



G 51

RECEIVER

DIVERSITY

Sensitivity

To -105dBm

VIDEO DECODING

Chrominance Profile
 Line Standard
 Video Bit Rates
 Latency
 Video Output
 Encryption

4:2:0
 525 and 625
 Between 1Mb/sec to 20Mb/sec
 < 100mS
 PAL or NTSC
 AES Encryption: Compliant with APCO

COFDM RF INPUT

Input Frequency

1.15 - 1.4GHz, 2.28 - 2.485GHz, 5.725 - 5.850GHz

PHYSICAL

Dimensions
 Weight
 Power Supply
 Antenna Connection
 Power Connection
 Video Connector
 Video Store

W272 mm x D60mm x H114mm
 1.6Kgs
 600mA @ 12vDC
 N Type (2off Diversity)
 LEMO 2Pin
 BNC
 Digital view and record system (optional briefcase receiver)



ANTENNA OPTIONS

Standard Omni Antenna
 High Gain Omni Antenna
 High Gain Directional Grids
 Yagi Antennas
 Mounting Kits
 Mobile Antenna Sets



**UNIT 20,
MURRELL GREEN BUSINESS PARK
LONDON ROAD,
HOOK, HANTS
RG27 9GR.
UNITED KINGDOM.**

**TEL: + 44 (0)1256 766600
FAX: + 44 (0)1256 766500
GSM: + 44 (0)7791730115
+ 44 (0)7770808804**

E-mail : malik@comm-spec.com

WEBSITE : WWW.COMM-SPEC.COM



Unit 20 Murrell Green Business Park, London Road, Hook, Hampshire RG27 9GR
T: +44 (0) 1256 766600 F: +44 (0) 1256 766500 GSM: +44 (0) 7770808804/+44 (0) 7791730115
E: info@comm-spec.com & malik@comm-spec.com www.comm-spec.com

Registered Office: 4 High Street, Alton, Hampshire GU34 1BU Registered in England No: 04709360