



VHF AND UHF FM REPEATERS

IC-FR3100 (VHF FM Repeater)

IC-FR4100 (UHF FM Repeater)



25 Watt continuous full duty cycle operation

Employing a large heat sink, cooling fan and high performance power amplifier, the IC-FR3100/FR4100 provides a stable 25W at full duty cycle operation.

Automatic battery backup system

A built-in backup system supports automatic switching to an external power supply (13.2V DC) if the AC power supply fails.

Multiple CTCSS & DTCS tone memories with multiple memory channels

Up to 16 CTCSS/DTCS tones (TX/RX tones independently) can be programmed per channel. This feature allows you to share a channel with multiple user groups. You can also give priority/exclusive use to a specified group simply by programming different tones to another memory channel. Ideal for many different applications.

Built-in 2-Tone, 5-Tone, DTMF encoder & decoder

Multiple signaling systems are equipped as standard. These systems are fully compatible with Icom F-series radios.

Internal space for duplexer and isolator

The repeater has an internal space to install a duplexer and isolator*. The controls of the duplexer are accessible from the front of the repeater without disassembly. Faster and easier maintenance, and simple, convenient adjustment is possible.

* Ask your dealer for details about available duplexers and isolators.

Telephone interconnect capability

DTMF remote control capability

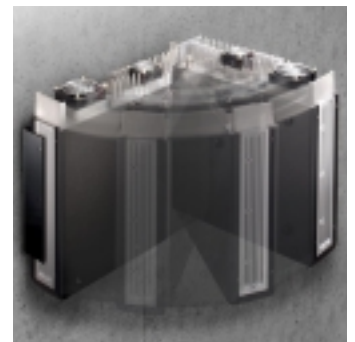
You can control the repeater from a remote location over the air or over a phone line with DTMF.

Wall or rack mount available

With an optional microphone, the repeater can be placed on a desktop as a base station. The optional MB-77 wall mount bracket allows you to set the repeater on a wall. A 19" 3U height rack mount bracket, MB-78, is also available.



19-inch rack mount, MB-78



Installation on a wall with the MB-77

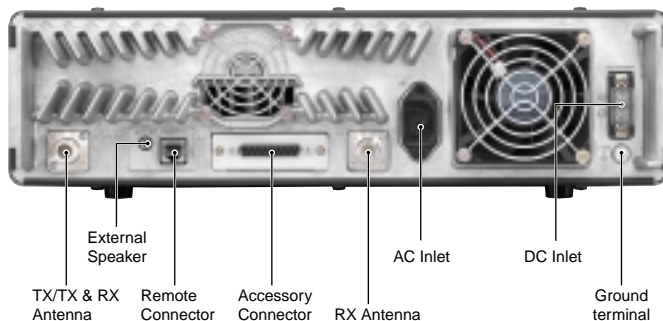
Icom Inc.

ADDITIONAL FEATURES

- Master/Slave backup operation by connecting two repeaters
- Self check function checks for internal errors and alerts with a beep sound or with a phone call
- Accessory connector (D-sub 25-pin) on the rear panel for trunking controller including LTR, PassPort, SmarTrunkII and MPT1327
- Compatible with VEGA tone remote control system
- 5-Tone relay function
- Optional Voice Scrambler UT-109 or UT-110
- CW ID transmitter (DTMF or 5-Tone also selectable)
- Password and kill/stun function for security
- 16-digit alphanumeric display for base station operation
- A programmable button gives access to a customized function

All trademarks are the properties of their respective holders.

REAR VIEW



SPECIFICATIONS

GENERAL

- Frequency coverage : IC-FR3100 150–174MHz, IC-FR4100 400–430MHz, 450–480MHz
- Number of channels : 32 channels
- Channel spacing : 12.5/25kHz, 12.5/20kHz
- PLL channel step : 5, 6.25kHz
- Operating temperature range : -25°C to +55°C
- Power supply voltage : 13.2V DC and 220–240V AC (50/60Hz)
- Current drain (at 13.2V DC) : TX IC-FR3100 (at 25W) 10A, IC-FR4100 (at 25W) 12A, RX Max. audio 2A typ., Stand-by 1A typ.
- Antenna impedance : 50Ω (Type-N x 2)
- Dimensions (Proj. not included) : 410(W) x 110(H) x 360(D) mm
- Weight (approx.) : 12kg

TRANSMITTER

- Output power : 25W (high), 5W (low) selectable (at 13.2V DC)
- Frequency error : ±1.0kHz
- Max. frequency deviation : ±5.0kHz (wide), ±4.0kHz (mid), ±2.5kHz (narrow)
- Spurious emissions : 0.25μW/-36dBm
- Adjacent channel power : 70dB (wide, mid), 60dB (narrow)
- Intermodulation attenuation : 40dB
- Microphone impedance : 600Ω (8-pin modular)

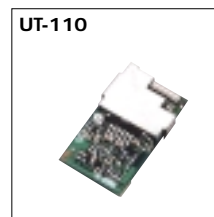
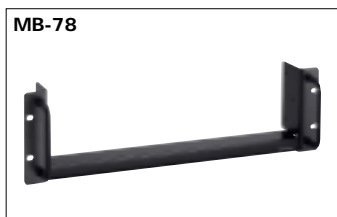
RECEIVER

- Sensitivity : ±0dBμV typ. (at 20dB SINAD; emf)
- Squelch sensitivity : -4dBμV typ. (emf)
- Adjacent channel selectivity : 70dB (wide, mid), 60dB (narrow)
- Spurious response : 70dB
- Intermodulation rejection ratio : 70dB
- Audio output power : 2.5W typ. at 10% distortion with a 4Ω load
- External speaker connector : 2-conductor 3.5 (d) mm/4Ω

Compatibility of functions for use with a telephone line may not work in some countries. Measurements made in accordance with ETS 300 086. All stated specifications are subject to change without notice or obligation.

OPTIONS

- **MB-77 WALL MOUNT BRACKET**
For mounting the repeater on a wall. Hinges provide easy maintenance while mounted.
- **MB-78 19" RACK MOUNT BRACKET**
The 19 inch rack mount bracket is 3U height (133.5mm).
- **HM-100N HAND MICROPHONE**
- **HM-100TN DTMF MICROPHONE**
- **SM-25 DESKTOP MICROPHONE**
Convenient for dispatching. Equipped with a monitor switch.
- **UT-109 VOICE SCRAMBLER UNIT (Version 01)**
Provides operating security. Up to 32 non-rolling scrambling codes are available.
- **UT-110 VOICE SCRAMBLER UNIT (Version 01)**
Up to 1020 (255 codes x 4 groups) rolling scrambling codes are available.



Your Distributor/Dealer:



**Communication Specialists Ltd. Unit 20, Murrell Green Business Park,
London Road, Hook, Hampshire. RG27 9GR United Kingdom**
Tel. +44(0)1256766600 Fax. +44(0)1256766500
www.comm-spec.com info@comm-spec.co.uk

